

Hyatt Place Chicago South/University Medical Center



[Hyatt Place Chicago South/University Medical Center](#)

5225 S. Harper Avenue

Chicago, IL 60615

Phone: 773-752-5300

Fax: 773-752-5400

Reservation Contact: Jody Freggens, 773-420-2610, jody.freggens@hyatt.com

Guest room [rates](#) vary by season and are subject to availability. The University of Chicago rate is available to travelers whose room expense is being paid by the University. A Friends and Family discounted rate is available to affiliates and guests who will be paying for the room directly

For groups of ten or more, contact [Jody Freggens](#) at 773-420-2610. Click here to view the [Group Rooms and Function Space Agreement](#).

Blackout Periods

Convocation Weekend, Orientation Weekend and Parents Weekend

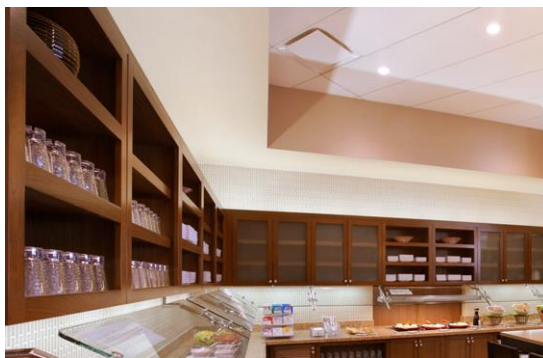
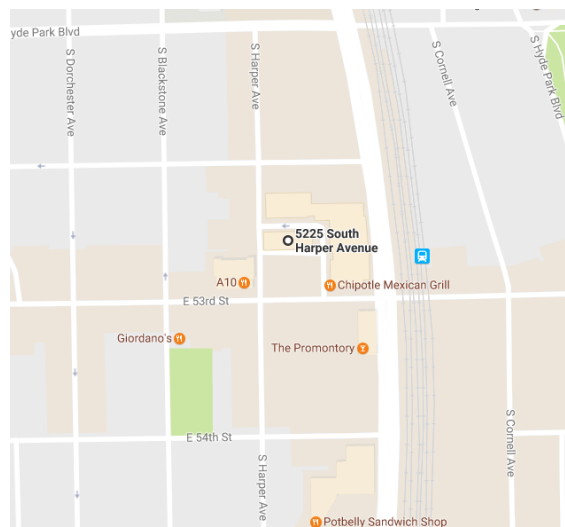
Cancellation Policy

By 6:00 PM CT, 24 hours prior to day of arrival

The Hyatt Place is the closest hotel to the University campus and the University of Chicago Medicine. Located at 53rd Street and Harper Avenue, it is in the heart of Hyde Park's vibrant Harper Court development offering restaurants, shopping and entertainment.

This new LEED-certified, 6 story hotel boasts 131 stylish and fully-equipped guest rooms along with contemporary guest amenities including a Hyatt Place Gallery (front desk/lobby), indoor pool, fitness room, and easily accessible and affordable valet parking. A state-of-the-art meeting room seats up to 60 people comfortably.

- Complimentary daily shuttle service to/from campus 7am-7pm
- Complimentary hot breakfast buffet daily
- Complimentary hi-speed internet access
- Complimentary fitness room and pool



Reimbursement Policy

Faculty and staff business travel expenses are to be processed through the GEMS System located at <https://gems.uchicago.edu/login/auth.php>. Reimbursement of student and guest business lodging expenses is to be requested on a Travel Expense Voucher (Form 97) following the University's Financial Policy No. 1202, Travel Policies & Procedures.